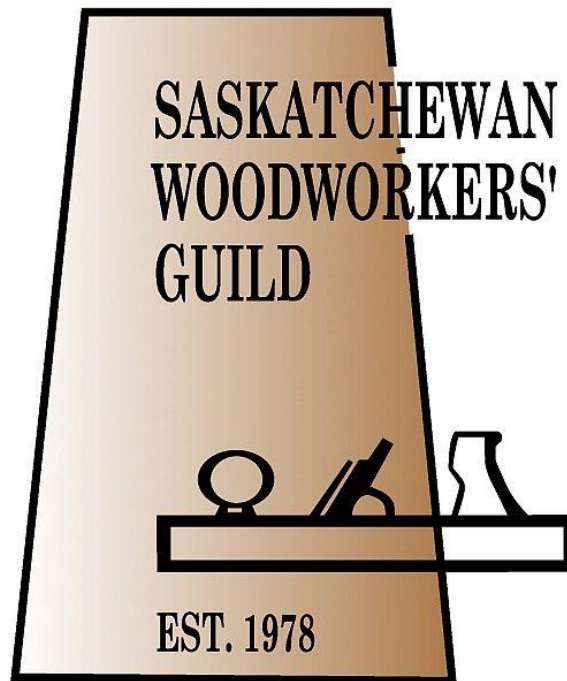


The Saskatchewan Woodworker

Newsletter of



Publications Mail Agreement
Number 0040029385



IN THIS ISSUE

PRESIDENT’S MESSAGE2
CALENDAR OF EVENTS.....3
SWG SEPT MEETING MINUTES.....4
SHOW AND TELL5
DEMO6
MEMBERSHIP LIST 11
FROM CAL’S MESSY DESK 14
CHRISTMAS PARTY 15
SALVATION ARMY BELLS 16
SHAVINGS 17
EXECUTIVE AND CONTACTS 24

PRESIDENT’S MESSAGE

- submitted by Paul Perron

We have come to that time of year when things are getting busy for the Christmas season and the new year will soon be upon us.

We can look back at the last couple years and be thankful that we are getting back to normal after the pandemic. We are getting reasonably decent numbers at meetings, and people seem to be having fun. We are, after all, in this club to learn and enjoy the comradery of fellow woodworkers. If there was no fun in it, there would be no creativity, and no new ideas.

We, as a guild, are also back to offering classes and workshops which are being coordinated by Patricia Oderkirk. We have a few classes and workshops coming up in the new year, so maybe you can learn a new skill to incorporate into your own projects. The costs for these classes are very low, making them quite reasonable and affordable for all.

We are fortunate to be able to gather and get ideas and information from fellow members with our demos. All of our demos this year have held the interest of much of the group. Guild members have never held much for secrets, sharing their knowledge and experience with others.

Our demo coordinator will be looking for some new ideas in the upcoming year. If you have a skill that you could demo, or some wisdom to impart with the membership, the meeting demos

are a great way to do so. Talk to Jack – only 5 spots left in this season! This month is our annual bring a jig. Nothing commercially available unless it is very unique!

As we share information with fellow woodworkers, with this time of year, it is important to note that many of our members share with those less fortunate in our society. We have members who share their time to volunteer in the community to helps others directly, and we have some who help other organizations by volunteering time for fundraising – such as ringing the bells for Salvation Army’s kettle campaign.

We have a number of members who donate to such helpful and charitable organizations such as the foodbank and Secret Santa. The organization I am employed by has transitioned from a gift exchange at the annual Christmas party, to everyone bringing in a toy for Secret Santa. This usually results in truckloads of toys being delivered.

When you are sitting down for a meal with family and friends this holiday season, take a moment to recognize how fortunate we are to have a roof over us, food in front of us, and family and friends around us.

On behalf of the executive, a merry Christmas to all, and best wishes in the new year.



CALENDAR OF EVENTS

December '23							January '24							February '24						
S	M	T	W	T	F	S	S	M	T	W	T	F	S	S	M	T	W	T	F	S
					1	2		1	2	3	4	5	6					1	2	3
3	4	5	6	7	8	9	7	8	9	10	11	12	13	4	5	6	7	8	9	10
10	11	12	13	14	15	16	14	15	16	17	18	19	20	11	12	13	14	15	16	17
17	18	19	20	21	22	23	21	22	23	24	25	26	27	18	19	20	21	22	23	24
24	25	26	27	28	29	30	28	29	30	31				25	26	27	28	29		
31																				

Tuesday, Dec 12th 2023 Hub City Turners regular meeting at Walter Murray Collegiate

Thursday, Dec 14th 2023 SWG regular meeting 7:30 pm at Walter Murray Collegiate

Tuesday, Jan 2nd 2024 SWG Executive Meeting 7:00 pm

Tuesday, Jan 9th 2024 Hub City Turners regular meeting at Walter Murray Collegiate

Thursday, Jan 18th 2024 SWG regular meeting 7:30 pm at Walter Murray Collegiate

Tuesday, Jan 30th 2024 SWG Executive Meeting 7:00 pm

Tuesday, Feb 13th 2024 Hub City Turners regular meeting at Walter Murray Collegiate

Thursday, Feb 15th 2024 SWG regular meeting 7:30 pm at Walter Murray Collegiate

If you know of any woodworking related events that may be of interest to members and that could be listed on this page, please contact the editor at: newsletter@saskwoodguild.ca



The Next Regular Meeting will be on Thursday, January 18th, at 7:30 PM. The meeting location is the shop on the east side of Walter Murray Collegiate, located at the corner of Preston Avenue and Taylor Street. Doors open at 7:00.

Coffee available for \$0.50, drink boxes for \$1.00 each, and donuts for \$1.00 each.

This month is the annual “Bring a Jig” night for our demonstration! Bring a jig you’ve made and use in your shop to show others.

Any ideas for future demos please contact Jack Magera at education@saskwoodguild.ca

**Saskatchewan Woodworkers' Guild
Regular Meeting – November 16th, 2023
Walter Murray Collegiate**

1. Call to order by Paul Perron at 7:32p.m.
2. There were 5 guests and 25 members in attendance.
3. Announcements:
 - a. Paul Perron reminded all that if you take a chair from another room, it must put it back there. Also, please stack stools back onto the tables at the end of the meeting.
4. Reports:
 - a. Wood show – Paul Perron:
 - i. Still looking for a volunteer to chair the committee
 - ii. Also still looking for volunteers to help out with organizing, set-up, etc
 - b. Treasurer/Membership – Shane Hammer:
 - i. 56 paid members to date
 - c. VP – Jack Magera:
 - i. We have 2 Great West Saw gift cards for the door prizes tonight. Each is for \$25.
 - d. Education – Patricia Oderkirk (Absent):
 - i. There are 2 forms being passed around. One for anyone interested in instructing a class and one for what types of classes people are interested in being offered
 - e. Library – Shane Hammer:
 - i. No change
 - f. Demos/Shop visits – Jack Magera:
 - i. Tonight's demo will be on Building a Custom Guitar by Dave Armstrong
 - ii. December there won't be any demo as it is bring a jig month
 - iii. Send any ideas for demos to Jack
 - g. Community liaison – Paul Perron:
 - i. Christmas party is November 25th at Smiley's. Cost is \$28.00 per person. Handmade gift exchange will go on again this year, give 1, get 1. Gifts do not need to be Christmas themed. Gifts are normally wrapped.
 - ii. The Guild will be doing Bell Ringing for the Salvation Army again this year. It will be at the Stonebridge Coop. A sheet will be handed around to sign up to volunteer
 - iii. The turners are having a craft sale at Market Mall on the 25th if you want to come down
 - h. Newsletter – Patricia Oderkirk (Absent):
 1. Nothing new
5. Q&A:
 - a. Don Fletcher had a reply to the September question about scrollsaw blades. The Scrollsaw Woodworking magazine had an ad for a No Fail Blades Guide that may be useful.
 - b. Mark Norte asked for opinions on Forced Air Respirators.
 - i. Shane Hammer – they're made by 3M and they are amazing. They're not cheap. They're a full face shield so they don't require fitting and the don't fog up.
6. Show & Tell:
 - i. Dave Armstrong, Mel Gange, Kelly Robyn Bellamy and Doug Cox all had items to display.
7. Door prizes – Jack Magera:
 - i. Tonight's winners for the GWS cards – Gary Hassel and Glen Friesen
8. Demo:
 - i. Dave Armstrong did a presentation on the making of a custom guitar

Adjourned at 8:49 pm.

SHOW AND TELL

- compiled by Dave Armstrong

Doug Cox:

Doug showed us two items: a cabin sign and a cheese board. The cabin sign was made of basswood with pyrography and finished with spar urethane.



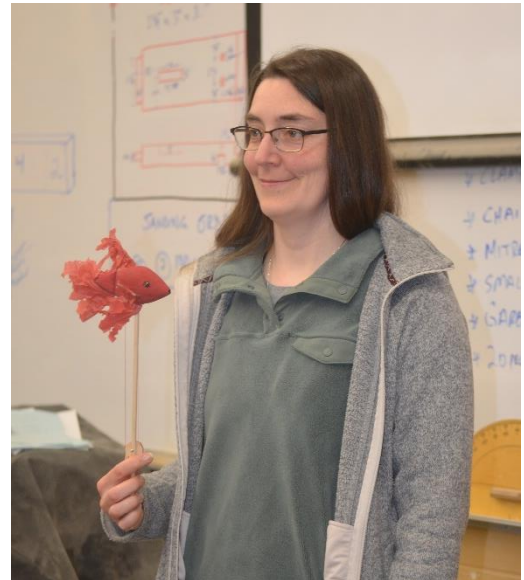
The cheese board was made of maple with pyrography and finished with mineral oil and beeswax.



For Sale: ShopSmith Mark 5
All in one - Bandsaw, table saw, lathe, drill press, disc sander, and jointer.
All accessories and manuals included.
Call Elton - (306) 222-6871

Kelly-Robyn Bellany:

Kelly showed us a "Fish stick (or Beta)" Puppet made of spruce. A wheel positioned on the stem of the puppet can be turned to make it move.



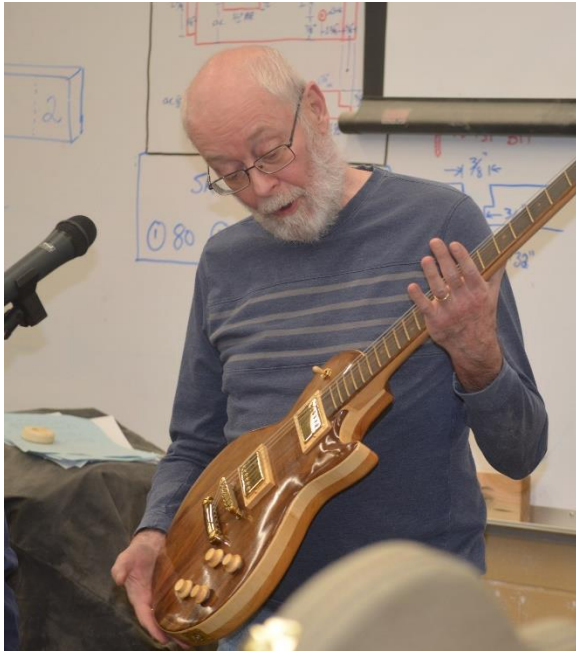
Mel Genge:

Mel showed us an inside out turned ornament made of lacewood and padauk. Mel won padauk piece as a door prize at wood turners meeting.



Dave Armstrong:

Dave showed a Custom Guitar made of roasted hickory walnut maple and European beech. It is finished with Tru-Oil.



TO OUR MEMBERS

We now accept E-transfers from members at treasurer@saskwoodguild.ca. You will not require a security question as there is auto deposit on our end. Mailed dues should be sent to Saskatchewan Woodworkers' Guild (P.O. Box 7196, Saskatoon, Sk., S7J 4K2.) For your membership fees, we would prefer E-transfers for payment. Cash or cheques is still accepted (but please do not send in mail).

We will also REQUIRE a current Application form filled out and sent to the same address with an E-transfer. (treasurer@saskwoodguild.ca). A fillable form is available on the website. An application is required with your cheque or cash if you decide to go that way (simply fill out and print).

DEMO

- Written and Submitted by Dave Armstrong

Making of a Custom Guitar

My son-in-law wanted another guitar. He desired a Gibson Les Paul look a like. The Gibson Les Paul was originally manufactured in 1959 and is manufactured to this day.



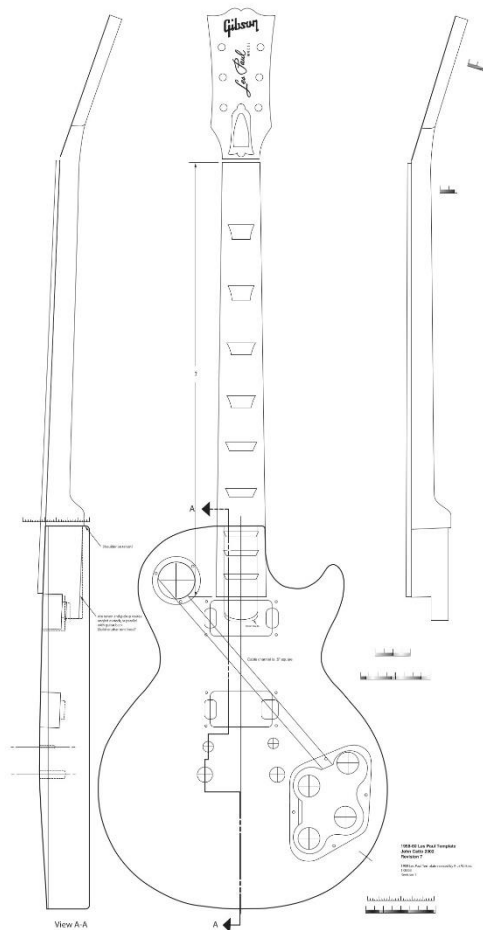
There are a couple of interesting features of this guitar, the top is carved and the neck is canted back from the plane of the body by 5 degrees.

There were a couple of modifications that he wanted. The son-in-law normally plays Fender style guitars, these have a scale length of 25.5 inches. The scale length is the distance from the nut to the bridge and defines the vibrating length of the string. Gibson uses a short scale length of 24.75 (ish, it varies slightly from one model of guitar to another) The second modification was to thin out the upper right hand corner of the guitar so that his right arm doesn't chaff on the guitar.

The first task was to find a plan. There is a web site that hosts many guitar plans, this site is www.electricherald.com. A plan that included a pdf of a full size plan was downloaded

A graphics program was used to measure the positions of the tail piece, bridge, bridge pickup and the neck pickup. I decided to keep the neck

pick at the position marked on the plan. Using a spreadsheet, the differences in the locations of



The red arrows near the outside edge of the guitar indicate the direction of travel for a router to trim the various layers of the guitar. The new positions to the tailpiece, bridge and bridge pickup are marked in red. The are two tooling holes indicated, in the upper right and the lower left, these are where cavities will be in the finished guitar.

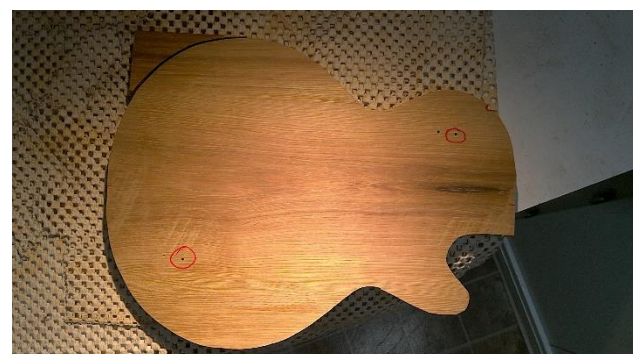
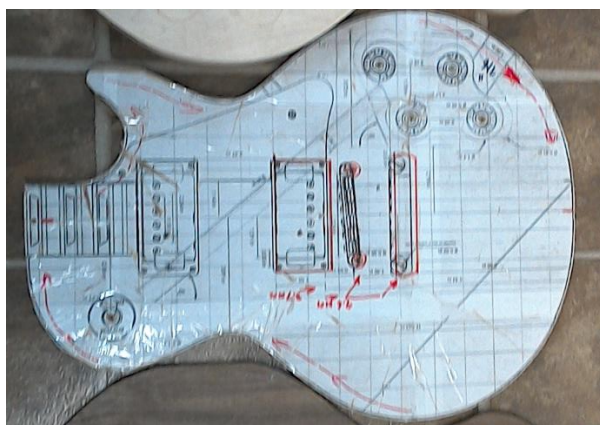
The hardware for the guitar was ordered from solomusicgear.com. It was necessary to have the hardware in hand to ensure that the holes and cavities were sized correctly. The hardware consisted of the two pickups, pre-wired tone and volume pots, bridge, tail piece, pickup selector switch, the knobs for the guitar strap, output jack, parts for the bolt on neck and various screws. Also ordered was gold fret wire and a two way truss rod.

The guitar body was made in three layers, the bottom layer is roasted hickory, the middle layer is maple and the top layer is walnut.

the above mentioned parts were calculated. A software program was used to split this into pages that could be taped together to make a template. This template was glued to a piece of MDF which was then cut out to produce a template.



The template was used to locate and drill tooling holes in the hickory. Then using drill bits as pins, the template was afixed to the hickory and the bottom layer was routed.



Note the tooling holes are marked in red.

Next the middle layer was cut and routed.



Note pilot holes for the control potentiometers.

Finally the top layer was constructed. This layer is made of walnut, The board was nominally 1 inch thick, of proper length, and just over 1/2 of the required width. It was split, using a handsaw, into two pieces, roughly 3/8 of an inch thick.



The top was then bookmatched.



Then the layers are refined, starting with the back (bottom) layer. This entailed making of two cavities and their covers. The first cavity is for the selector switch, it is simply a round hole cut with a forstner bit. The cover was turned on the lathe. The second cutout is an (almost) trapezoidal. A router template was built to make the opening in the back and to cut the cover.



The middle layer was then constructed.



Here the middle layer has been bonded to the back, Three dowel pins that register the two pieces together are visible, lower left and right and upper middle. The pickup cutouts have been routed, a template was built to get the right shape, the template was secured to the blank using the pilot holes for the bridge and tail piece. Note that the neck cavity has not been routed in this photo. The cavity for the potentiometers is on the lower left and was cut with a forstner bit and a scroll saw. The channel connecting the pickup selector switch to the control cavity has been routed. Note the diagonal line in the upper left corner, this is where the top will be cut to achieve the desired tapering.

The top was roughed out and then attached to the middle layer with screws. Pickup cavities were routed out using the template used for the middle layer. Pilot holes for the controls are in place. The neck pocket has been machined using a template keyed from the pilot holes for the tail piece and bridge. The line marking where the top will be cut to produce the thinned edge is visible in the upper left.



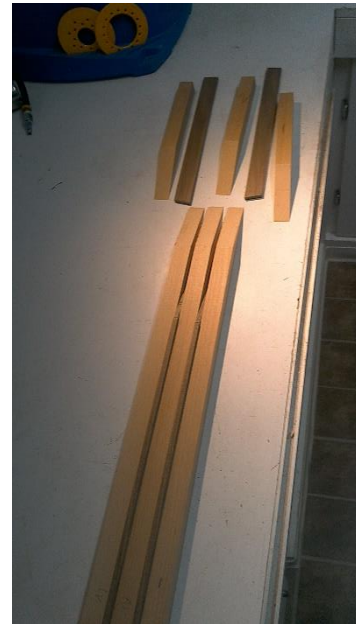
The top was cut along the diagonal line mentioned above, The middle layer was thinned from the line marked on the layer. A jig was built to hold the two pieces of the top at the proper angle to mitre the edges. The top was then glued to the middle layer.



The top was hand carved to the proper profile. Note that the maple middle layer is visible all the way around the outside edge of the guitar, providing the effect of a binding. The top was finished with Tru-Oil. This finish is intended to be used on gun stocks but it works nicely for this application. It is available at Lee Valley.

Les Paul guitars have a bad reputation for having their necks break. This is because the neck is canted back by 5 degrees and the headstock is further canted by ~ 15 degrees. If you lay a Les Paul down on a flat surface with its back down, it rests on the far end of the headstock and the back end of the guitar body. If the guitar is set against something and then falls, all of the impact is taken by the headstock

The neck is laminated from european beech and walnut. There are six pieces of beech and four of walnut.



At the neck / head stock joint, the locations of the walnut to walnut joints are offset from the beech to beech joints forming an interlocking joint.



Once the neck is out of its clamps and is cleaned up we have a neck blank.



To prove to myself that it was strong, I placed the blank on the floor and stood on it! The neck has a two way truss rod inserted into a cavity that is covered by the fret board.

The fret board is made of maple. The playing surface of the fret board is radiused at 12 inches. A jig was built to rough radius the fret board using a router, and it was then hand finished. The fret board has poured epoxy marker dots. The fret board is ebonized with tea and steel wool dissolved in vinegar. The location of the frets was marked and then cut with a saw designed for cutting fret slots. The fret wire came as a long flat strip, it was bent to the radius of 12 inches using a jig. The fret wire was cut to length and then pressed into the fret board with a drill press. The fret board was glued to the neck.

The control knobs, pickup mounting rings and the pick guard supplied with the hardware kit were cheap looking plastic. I turned replacement knobs from maple. The mounting rings were replaced with maple versions and the pick guard was left off.

All of the pieces were then assembled to form the complete guitar.



Saskatchewan Woodworkers' Guild
Membership List

Last Name	First Name	Alternate Member	City/Town	Prov.	Postal Code	Telephone No.
Aden Bowman Collegiate	I.A. Dept		Saskatoon	SK	S7J 1L3	
Armstrong	David		Saskatoon	SK	S7K 6E8	306-242-7634
Atlantic Woodworkers		Ted Monk	Dartmouth	NS	B2W 6J7	902-435-3686
Bedford Road Collegiate	I.A. Dept		Saskatoon	SK	S7L 0G2	
Bethlehem Catholic High School	I.A. Dept.	Les Lang	Saskatoon	SK	S7M 0L1	
Birch	Duncan		Saskatoon	SK	S7N 1X7	306-374-2528
Bishop James Mahoney High School	I.A. Dept		Saskatoon	SK	S7K 6Y3	
Bishop Murray High School	I.A. Dept		Saskatoon	SK	S7H 3C2	
Brehon	Kevin	Alex Brehon	Saskatoon	SK	S7L 0J3	306-361-9924
Brown	Howard		Saskatoon	SK	S7J 5S4	306-227-6192
Ciona	John		Crossmount	SK	S7T 0X7	306-955-2300
City Park Collegiate	I.A. Dept		Saskatoon	SK	S7K 2Z2	
Coupland	Nelson	Cheryl Coupland	Foam Lake	SK	S0A 1A0	306-272-8202
Cox	Doug		Warman	SK	S0K 4S0	306-242-7328
Davidson	Ron		Saskatoon	SK	S7J 0W2	306-931-3065
Dawson	Bob		Regina	SK	S4V 0W6	306-789-2945
Drury	Robert		Saskatoon	SK	S7L 3V2	306-382-3155
Dunkley	David		Saskatoon	SK	S7J 5G3	306-373-6339
E D Feehan High School	I.A. Dept		Saskatoon	SK	S7L 2S7	
Edmonds	Tom W.					
Evan Hardy Collegiate	I.A. Dept		Saskatoon	SK	S7H 3V8	
Feader	Pamela		Saskatoon	SK	S7K 7M1	306-716-5370
Fletcher	Donald		Saskatoon	SK	S7N 3V1	306-242-9832
Fotheringham	David		Cochrane	SK	T4C 1S6	403-932-1183
Fraser Valley Woodturners Guild			Langley	SK	V2Y 2J9	
Freistadt	Lynn		Saskatoon	SK	S7S 1K5	306-373-8607
Friesen	Glen		Waldheim	SK	S0K 4R0	306-270-9928
Fritz	Leo		Saskatoon	SK	S7N 1W7	306-374-6540
Genge	Mel		Saskatoon	SK	S7L 0E6	306-653-2297

Saskatchewan Woodworkers' Guild
Membership List

Last Name	First Name	Alternate Member	City/Town	Prov.	Postal Code	Telephone No.
Great Western Saw			Saskatoon	SK	S7K 8G1	306-652-6858
Hammer	Shane		Saskatoon	SK	S7K 3J5	306-371-8564
Hassel	Garry		Saskatoon	SK	S7H 0W9	306-221-6357
Hauser	Zach		Saskatoon	SK	S7H 0H8	306-343-8598
Holy Cross High School	I.A. Dept		Saskatoon	SK	S7J 3K8	
Hosaluk	Mike		Saskatoon	SK	S7K 3J5	306-382-2380
Isaacson	Calvin		Saskatoon	SK	S7J 2S1	306-374-4507
Jacek	A.J. (Gus)		Saskatoon	SK	S7K 8B9	306-229-2173
Jones	Art		Prince Albert	SK	S6V 1Z7	306-747-2476
Kroeger	Steve		Hanley	SK	S0G 2E0	306-221-0898
Lee Valley Tools Ltd.			Saskatoon	SK	S7K 0X8	
Les Gens de Bois		c/o Larry Weselake	Winnipeg	SK	R2C 3X5	204-668-0756
Longstaff	Jim		Saskatoon	SK	S7J 0M6	306-220-1504
Macdonald	Doug		Saskatoon	SK	S7H 5P6	306-374-3364
Magera	Jack		Asquith	SK	S0K 0J0	306-203-1922
Marchand	Brandon		Saskatoon	SK	S7H 2E1	306-491-3117
Marion Graham Collegiate	I.A. Dept		Saskatoon	SK	S7K 6A6	
Marks	Willie		Saskatoon	SK	S7M 4M1	306-227-0522
Martin	Bernie		Saskatoon	SK	S7N 1S4	306-374-7611
McLeod	Gerald		Saskatoon	SK	S7J 3R3	306-374-5247
Morelli	Up		Saskatoon	SK	S7L 1T3	306-281-6674
Mount Royal Collegiate	I.A. Dept		Saskatoon	SK	S7L 4A4	
Nagel	Bernard		Saskatoon	SK	S7L 3T6	306-460-9271
Noete	Mark		Saskatoon	SK	S7V 1K5	306-280-4741
Northern Light Carvers		Al Jardine	Melfort	SK	S0E 1A0	
Oderkirk	Patricia		Saskatoon	SK	S7V 1C2	306-491-3752
Parkland Woodworking Guild		Rose Sveinbjornson	Churchbridge	SK	S0A 0M0	306-783-9003
Pearson	John		Saskatoon	SK	S7S 1H7	306-229-3223
Pelletier	Marcel		Saskatoon	SK	S7T 0T4	306-280-5212

Saskatchewan Woodworkers' Guild
Membership List

Last Name	First Name	Alternate Member	City/Town	Prov.	Postal Code	Telephone No.
Perron	Paul & Roxane		Grandora	SK	S0K 1V0	306-280-3111
Petlikau	Alex		Warman	SK	S0K 4S0	306-242-2447
Phillips	Glen		Saskatoon	SK	S7J 0C2	306-244-4536
Poulsen	Greg		Saskatoon	SK	S7L 2P1	306-514-7057
Prince Albert Woodturners Guild		Doug Corrigan	Prince Albert	SK	S6V 0K7	306-763-2135
Regina Whittlers and Carvers	Bill Dearborn		Regina	SK		
Richmond Carvers Society			Richmond	BC	V7C 5M4	604-531-9528
Rocky Mountain House Carvers		Carmen Jensen				
Rowney	Phillip		Saskatoon	SK	S7N 1Z9	306-249-1681
Russell	Jamie		Vanscoy	SK	S0L 3J0	306-934-0082
S. Alberta Woodworkers Society			Calgary	AB	T2Y 2Z7	
Sacred Heart High School	I.A. Dept		Yorkton	SK	S3N 2A8	306-783-3128
Sander	Chelsea		Martensville	SK	S0K 2T2	306-730-6556
Sask Craft Council			Saskatoon	SK	S7N 1B5	306-653-3616
Scheffers	Chris					
Smith	Gordon		Saskatoon	SK	S7H 5C4	306-260-1994
So. Sask. Woodworkers Guild		Ron Sikorski	Regina	SK	S4X 1V6	
St. Joseph High School	I.A. Dept	King Kwan ,	Saskatoon	SK	S7S 1H1	
Sten	Theodore		Saskatoon	SK	S7L 3V3	306-382-5112
Thorson	Eldon		Prince Albert	SK	S6V 2P9	306-764-4311
Tommy Douglas Collegiate	I.A. Dept.		Saskatoon	SK	S7M 0L1	
Vanc Island Woodworkers Guild			Victoria	BC	V8X 5E1	
Vanderloos	Bill		Saskatoon	SK	S7N 4M1	306-373-5093
Walker	Victor		Saskatoon	SK	S7H 5T1	306-244-4124
Walter Murray Collegiate	I.A. Dept		Saskatoon	SK	S7J 2E7	
Zlipko	Mark	Ryan/Rachel/Parker	Martensville	SK	S0K 2T0	306-491-4145
Zwack	George		Saskatoon	SK	S7T 1C4	306-270-3227

FROM CAL'S MESSY DESK

- submitted by Cal Isaacson

Upcoming Classes

Just a reminder that classes listed here are *other* than those sponsored by the Guild.

Black Forest Wood Co.

Located at Bay 7, 603 – 77th Ave SE, Calgary, AB

For information on classes or to register, please call (403) 255-6044. Descriptions of classes can also be found on their website www.blackforestwood.com

Lee Valley Tools

Lee Valley Tools is now open in Lawson Heights Mall. Their pop-up location in the mall will remain open until January 31, 2024. No word yet on any demos or seminars being offered.

Saskatchewan Polytechnic

Several levels of carpentry classes are offered through Saskatchewan Polytechnic. For more information, check their website at www.saskpolytech.ca

Saskatoon Makerspace

Check out the website at <https://saskatoonmakerspace.com> to find what classes are available. You may also contact them by email at hello@saskatoonmakerspace.com or by phone at 306-291-6494

Saskatoon Trades & Skills Centre

Construction classes are available. Please check their website at www.saskatoontradesandskills.ca for information on courses offered.

Maple and Bass Classroom

Located at 301B 9th St N in Martensville, SK
Carve a Mountain Bluebird with Cam Merkle
Limit of 8 students; carvers of any experience level

Thursday Evenings Jan. 11 through March 21, 2024 7:00 pm – 9:45 pm

(Apparently this class is sold out as of Nov 29, 2023, but you can go on a waitlist)

Carve a Fishing Lure with Cam Merkle

Saturday, March 23, 2024 9:00 am – 5:00 pm

Limit of 8 students; carvers of any experience level

For more information or to register for a class, do a Google search on Maple and Bass Classroom

Other Activities

Hub City Turners

The Hub City Turners will meet at Walter Murray Collegiate shop the second Tuesday of each month.

For more information, contact Steve Penn at 1-306-227-1210 or by email at stevepenn34@gmail.com

Drop-in Carving and Woodburning at the Maple and Bass Classroom

Every Tuesday and Friday morning from 9:00 am – noon

Tuesdays: Dec. 5,12, Jan. 9,16,23,30, Feb 6,13,20,27, Mar. 5,12,19,26*

Fridays: Dec. 8, Jan 5,12,19,26, Feb. 2,9,16,23, Mar. 1,8,15,22,29*

*Sessions will continue through to the end of May. Depending on demand sessions may continue year-round.

No sessions on any statutory holidays and between Dec. 15 and Jan. 2.

For more information call Maple and Bass at 306-384-2277 or email

hello@mapleandbass.com

Prairie Canada Carving Expo

This event will be held April 19, 20, and 21, 2024 at the Pembina Curling Club, 1341 Pembina Highway, Winnipeg, MB.

More information will be available in the new year. Check at

www.prairiecanadacarvers.com

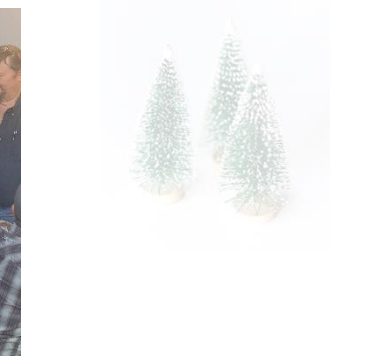
SWG Christmas Party

- submitted by Paul Perron

On Saturday, November 25, 2023 10 people gathered for the annual SWG Christmas Party. The group was too small to have a separate room, but we had one corner of a large room all to ourselves. Actually, we had the whole large room to ourselves that night as it was not busy at Smiley's Buffet.



It was a good time to socialize with others and meet some newer some hadn't met before. As usual, the gift exchange delivered some very lovely handmade gifts that were enjoyed by all recipients. Unfortunately, one couple had already departed before photos were taken. Next year has already been booked for Nov 30, 2024.



Salvation Army Bells

- submitted by Paul Perron

On December 2, 2023, five SWG members rang the bells at the Salvation Army Christmas Kettle in Stonebridge Coop from 11:00 am to 5:00 pm. Those volunteering for this were Bob Drury, Garry Hassel, Mark Noete, Cal Isaacson and Pam Feader. Thank you to all of you for donating your time to represent the guild for this cause.



SHAVINGS

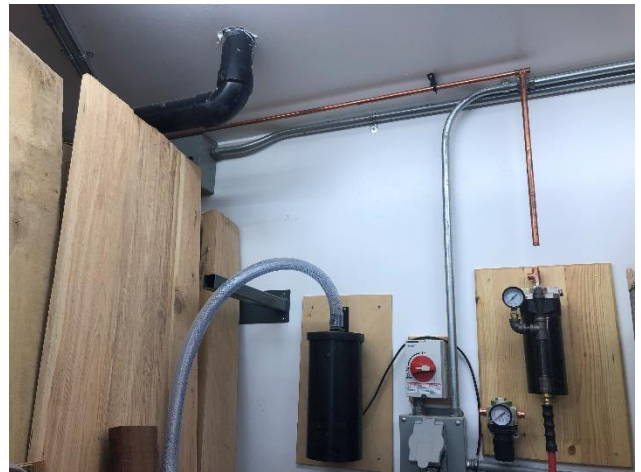
-submitted by Glen Friesen in May of 2023

It is wonderful to see nice weather again. I am starting to feel that winter gets a bit longer every year. At times, I feel that Sheila and I should relocate to a place with warm weather year round. But then, I see all the strife and violence happening in some of these countries and I rethink my position. Besides, we hate snakes. As my final day of teaching shop in my career approaches, I am coming to appreciate that my shop is only a 10-foot walk from my house. As I transition to working in my shop full time, I am happy that I don't have to be outside a lot in winter.



(The light snow to the right of the power pole covers a row of stumps that need to be ground this spring.)

As I try to get my shop ready for full time work, I am making some good progress. I now have a place to store all my clamps, a cabinet to store all my portable power tools, two hand tool cabinets, a nice sized work bench with tool storage and two table saws set up and almost ready for action. While I am always away from being completely done, I am happy with the progress to date. Much work remains to be done though. The main areas to be dealt with in the future are to run airlines throughout the shop as well as the dust collection ducting. If you have ever run a dual drum thickness sander without dust collection, you can understand how important dust collection is to a functional shop.



(Since I was going to store my jigs from the school shop on the small mezzanine above my bathroom, I wanted to run the air line in that section while I had it empty. I also positioned the air dryer and one regulator to anchor this system.)

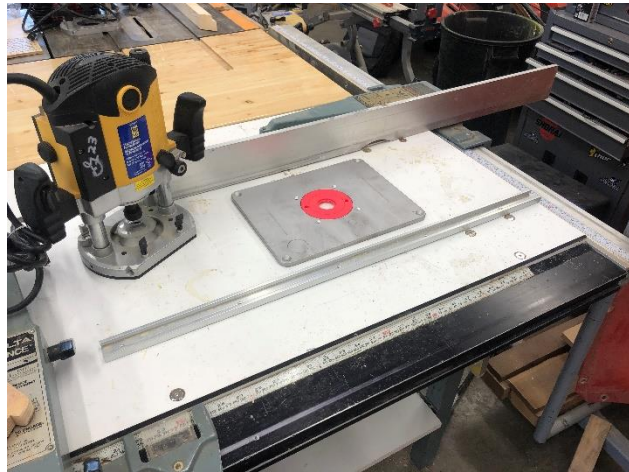
I was really hoping to be done working on my table saws by now. It seems that once I started, the list of things that I wanted to do really escalated. So far, I have installed the Beismeyer fence on my contractor saw and extended the side extension, attached the two saws back-to-back, put a lower shelf in the contractor saw and reinstalled the motor guard on the contractor saw. It just seems like I add more items to the list every time I complete one. I have basically written about this in the last few months of "Shavings".



(It is starting to look like I imagined it, but more work remains to be done.)

The Future:

On the list of tasks that I will complete next winter is the installation of a router plate to install another table-mounted router in the side extension of the Unisaw. I also intend to install a second Unifence at the end of the side extension to provide a fence for the table-mounted router. This set up is exactly the same as how I set up the school shop's two SawStop table saws. It works quite well. Orienting the router table fence on the end of the side extension makes installing the dust collection run to the table saws easier.



(All the pieces for my Unisaw table-mounted router have arrived. I think that I will install this next winter.)

One of the last items to work on with reference to the table saws is to mount the three table-mounted routers. One router is already mounted. I built a jig several years ago to horizontally mount one of the routers. This is mounted on the left side of the contractor saw. The other end of the contractor saw has a steel plate router table custom made to my specifications by an elderly machinist that used to be in our community. The last router will go in an aluminum plate installed in the right-side extension of the Unisaw .

For Sale: 6 inch Craftsman jointer. Includes manual and push pads. \$400. Contact Paul Perron at pperron@sasktel.net or text 306-280-1111



(This horizontal router jig that I built 20 years ago works really well.)



(The steel custom made router table, also constructed 20 years ago installed on the right end of the contractor saw. The Powerfist router that will be installed in it.)

Once the routers are installed, there will be some electrical work to perform. I am planning to make three switched plug-ins to plug the table mounted routers into and be able to turn them on and off. I am in the process of acquiring the pieces to be able to assemble them. While a set up like this can be purchased, I decided to build my own. I just do not really like the manufactured ones.

Another bit of electrical work that I intend to complete is to move the main switch of my Unisaw from the right side of the blade to the left side where all modern table saw switches are located. So, I have a bit of work to do yet to get my routers and table saws set up the way I want them to be.



(Some of the parts necessary for making my switches.)



(Another wiring priority is to move the main switch on the Unisaw to the left side of the blade.)

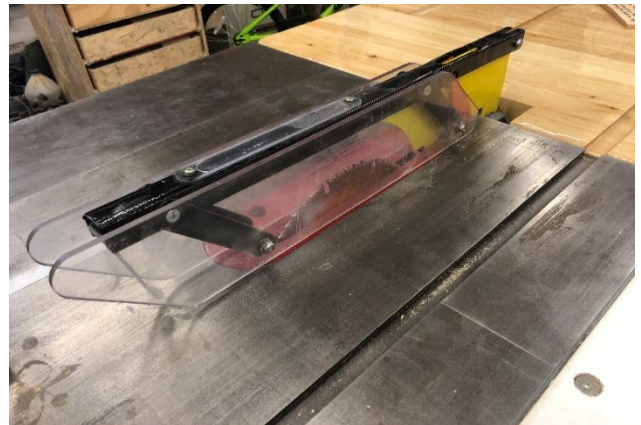
Finishing the Structure of the Saws:

The main structure of my table saw set up had a few things to finish off yet and that is what I am going to add to the discussion this month. While I have written about most aspects of my table saw set up, there are a couple of areas that I have been working on behind the scenes. One of these tasks was to modify the guard on the Unisaw and to reinforce and raise the sub structure of the right-side extension wing of the Unisaw.

Modifying My Unisaw Blade Guard:

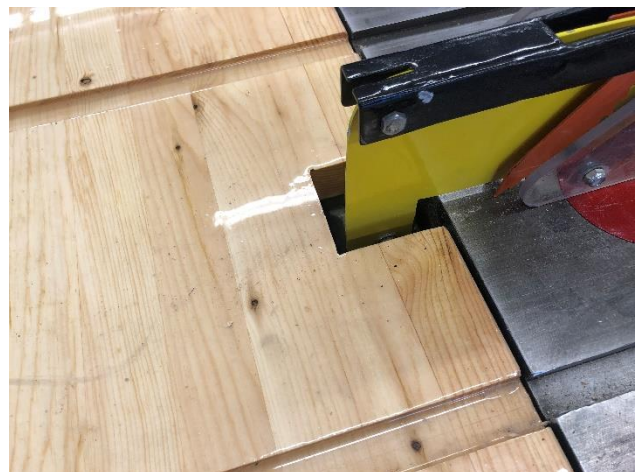
Since I have had a 30-year career working with students in a high liability environment like the school shop, I always use the guards if the machine comes with them. While I liked the design of the guard that was on my saw when I bought it, I realized that it was not the guard that

the saw originally came with. What impressed me about this guard was that both Plexiglas pieces that protect each side of the blade move independently. One thing about this guard that I did not like is that it is really large. By that, I mean long. While I like the guard, it just does not really fit the saw.



(The guard on my Unisaw.)

The first problem arose when I attached the two saws back-to-back. The 24.5-inch laminated connection table between the two saws would have required a fairly large hole cut into it to allow the guard to attach to the Unisaw and tilt the guard as the blade tilts. There is a shaft that attaches to the saw trunnion that extends out of the back of the Unisaw. In its original state, I would have had to cut about a 3 inch by 6-inch hole in my just-fabricated table top. So, I decided to shorten the splitter and the over-the-blade extension of the guard.



(A considerably smaller hole in the work surface made me feel a lot better.)

I started by modifying the splitter. I moved the rear splitter mount as close to the saw table as I dared and carefully measured the distance from the rear mount to the behind the blade mount. I wanted the mounting holes to remain in place so I measured and cut about a 3-inch section out of the middle so that important mounting points could remain. I welded the two pieces back together and ground, finished and painted it a nice bright yellow.



(I shortened the over the blade holder by about four inches. While I would still like the guard to be shorter, this is as short as it can practically be made.)

On this particular guard, there is a u-shaped piece of metal that supports the Plexiglas. I shortened this arm as well. Again, I tried to reuse all the mounting holes for the Plexiglas sides, the anti-kickback fingers and the mounting pin for the splitter. This was long overdue. While it was all apart, I painted the splitter yellow, the anti-kickback fingers orange and the over the blader support, black. I also repainted the throat plate red. Everything is now highly visible.



(Lots of bright colours surround the blade. I think that this adds to the visibility and safety of the unit.)

With all the paint and refabricated areas, it will take a bit of use for everything to function smoothly again, but I expect that to happen very soon as I put it to use again.

Raising & Reinforcing the Extension Wing:

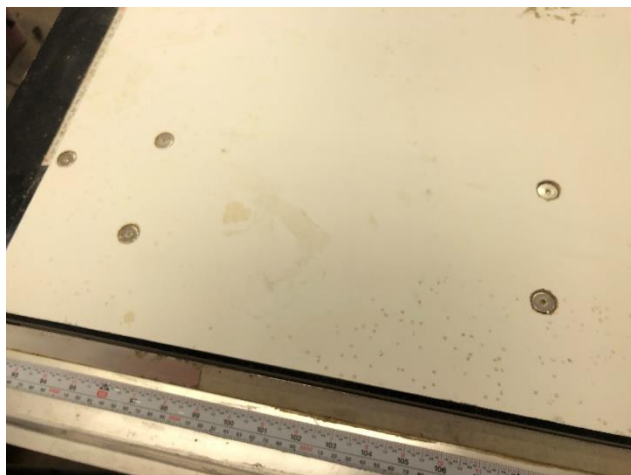
The other project that I needed to finish to kind of bring the structural part of the table saw build to an end was to raise the support legs on the Unisaw side extension and to install the shelf under the same side extension. While installing my routers and rewiring the Unisaw switch still remain to be done, finishing the legs and shelf basically brought the structural part of this build to an end.

Since I had raised up the Unisaw $\frac{3}{4}$ of an inch to match the height of the contractor's saw, the legs of the side extension also had to be raised. I actually raised each leg an inch. These legs were originally designed to be about a half inch above the floor which allowed for the $\frac{1}{4}$ -20 adjustable feet to give one the ability to adjust the legs if necessary. The two legs are held apart by two 15-inch pieces of angle iron from the factory. These pieces are bolted to the legs and then attached to the side extension table with four $\frac{1}{4}$ -20 bolts.



(I added a piece of 1-inch x 2-inch rectangular tube to the top of the legs to provide the necessary increase in elevation. I also made it four inches longer to move the legs wider apart for better stability.)

I always thought that having these two support legs the stock 15 inches apart was not enough. I measured the base of the Unisaw and found it to be about 19 inches. So, I put the legs 19 inches apart. I also decided to raise the legs an inch. I cut a piece of 1-inch x 2-inch rectangular tube to 19 inches and welded it to the top of the legs. This raised the legs one inch and also moved them farther apart. To allow the legs to attach to the side extension table, I welded the original 15-inch pieces of angle iron to both sides of the 1 x 2. I lined this up so that the original mounting holes in the melamine could be reused.



(Reusing the support angle iron pieces allowed me to use the original mounting holes for final assembly.)

Making & Attaching the Shelf:

Once the supports were modified and in place, I put the metal framework for the shelf in place. I used handi-angle to make this. I hope that everyone realizes what I refer to as handi-angle actually is. Home Depot refers to it as slotted metal angle. One consideration that I needed to keep in mind when placing the lower shelf in this saw was that the shelf needs to be high enough to clear the dust port at the bottom of the saw cabinet.



(My handi-angle shelf substructure. I used quarter inch bolts to assemble and attach it.)



(There is just enough room for the dust collection duct to be installed.)

Dust collection is hopefully in the relatively near future. Ideally, I would have liked to have run this section of the dust collection duct before I installed the shelf, but I just did not have time now. I made the melamine shelf panel so it can

be removed. I cut a piece of ¾ inch melamine 24 inches wide and 48 inches long. I used iron-on edge tape to finish the edges. I used 6 - 1 ¼ by ¼, 20 threads per inch fasteners and the companion nuts and washers. This will allow me to remove the shelf when I get around to installing dust collection.



(The almost finished shelf.)



(Quarter inch counter sunk head bolts attach the melamine shelf to the handi-angle sub structure.)

Spring Is Here:

Now that spring is here, I will shift my efforts from working on my shop to working on my house and yard. I had set a few goals for my shop at the beginning of winter. My goal was to have half of the floor space cleaned up and organized. I will come quite close to meeting that objective. Thankfully, I was able to host an inlay class at the end of February. This alerted me to a number of shortcomings in my shop. Unfortunately, I just realized these shortcomings as people started to arrive. The first one was that

I had no place to hang people’s coats. I also realized that some areas of my shop were difficult to navigate for people who has some difficulty getting around. Since I intend to make my shop a “social” space, I have already addressed the coat problem and am working on the flow of the shop as well. This will also improve as I create more storage and get the remainder of my space cleaned up. This will come in time.



(My newly constructed coat hook assembly. It is much better than using coat hangers and hanging them on the horizontal tracks of the garage door.)

But as the season changes, so do the tasks at hand. Sheila decided a few years ago to get back into gardening. However, both of us have no desire to till up a rectangular plot in our back yard to plant vegetables. She convinced me that raised-off-the-ground garden beds are the way to go. I built four smaller cedar beds a couple of years ago and they work well for tomatoes and herbs. We would now like to start growing potatoes and other what I would call staple vegetables. To this end, I have constructed five, 3-foot by 4-foot, 20-inch-deep beds and one 2-foot by 3-foot by 14-inches deep from shop waste materials. I made these out of off cuts and pine that had blue mold on it. The mold occurred because of the way it was stored after it was sawed. My sawyers saw mill burned to the ground in the middle of cutting the school’s order, so the freshly sawn pine sat for some time stacked tight. Since we are not painting many projects this year this wood is not suitable for projects. But, more on this in the future. June is coming and for me that means one more article

to write and at the end of June, school ends forever for me. Have an awesome May.



(One of the garden beds that I have constructed.)

I enjoy getting things done. I have spent a lot of time in my own shop this winter, creating items that make my shop easier and more pleasant to work in. Some of the items that I have been working on have been in the planning stages in my mind for years. As Hannibal Smith of the A-Team says, "I love it when a plan comes together".

Spending time working in my own shop on long overdue projects has been quite enjoyable. This winter has been a bit unusual as I have started moving all my stuff home from the school shop. It has been a process of organizing an aspect of my shop and then transporting a truck load of school items to my shop and cluttering up the area that I had just managed to clean up. This will be the reality until the end of June, but so far, I have managed to find a place for everything. It really helps to do this slowly. That is why I started this process at the end of the first semester. My goal is to just be able to hand in my keys and be done on June 30th.

Basically, all the things that I have done recently have centered around two major project areas. First, the installation of the Biesmeyer fence on my contractor saw which was necessary for me to arrange both my table saws as I planned. The other major project was getting my two rolling tool boxes to also hold my surplus steel and provide a proper "for me" work table. This month, the work on the table saw coral continues.



2023 – 2024 Executive and Committees

a) Executive officers

President: Paul Perron	president@saskwoodguild.ca
Vice-president: Jack Magera	vicepresident@saskwoodguild.ca
Past president: Kevin Brehon	pastpresident@saskwoodguild.ca
Secretary: Pam Feader	secretary@saskwoodguild.ca
Treasurer: Shane Hammer	treasurer@saskwoodguild.ca

Directors at large:

Up Morelli	membersatlarge@saskwoodguild.ca
Patricia Oderkirk	membersatlarge@saskwoodguild.ca

b) Committee chairs

Education: Patricia Oderkirk	education@saskwoodguild.ca
Demo/Shop visits: Jack Magera	education@saskwoodguild.ca
Library: Shane Hammer	library@saskwoodguild.ca
Newsletter: Patricia Oderkirk	newsletter@saskwoodguild.ca
Woodshow: Vacant	woodshow@saskwoodguild.ca
Web: Doug Cox	webmaster@saskwoodguild.ca
Community Liaison: Paul Perron	commliaison@saskwoodguild.ca
Grants and Awards: Up Morelli	swgdevelopmentgrant@saskwoodguild.ca
Guild Photographer: Everyone	photographer@saskwoodguild.ca

c) Ad hoc committees

Coffee: Garry Hassel

d) Newsletter Contributors

Messy Desk and Shop Visit: Cal Isaacson
 Show & Tell and Demo: Dave Armstrong
 Shavings: Glen Friesen

Membership in The Saskatchewan Woodworkers’ Guild is open to the public. The annual fee for membership is \$45, payable to the Saskatchewan Woodworkers’ Guild. Meetings are generally held on the third Thursday of each month.

Reminder – membership dues deadline is Oct 31. After this date if your fees are not paid up for the year, you will no longer be a member in good standing. Which means you will no longer receive the newsletter or have access Guild benefits.

***** NOTE *****

Saskatchewan Woodworkers’ Guild Web Page

<http://www.saskwoodguild.ca>

Photo Submission Guidelines

- Photos should be as high resolution jpeg file as possible. No RAW files please.
 - Photos should be emailed in, if this makes for a large email, an alternate method will be set up.
 - Photos texted in or from a web page will not be accepted.
 - Do not crop your photos, the editor will do that.
 - Not all photos may be printed, excess photos will be entered in our database and archived.
- Photos for newsletters are required two weeks before the regular meeting to be published that month.**